

FALCON 2000 | N364SM



The Falcon 2000 is a charter-friendly and spacious Super MidSized Jet, ideal for long-range business and leisure travelers.

The Falcon's cabin offers generous 10 passenger executive seating, stand-up headroom, a three-person crew, a refreshment center, Cabin video system with 15-inch forward bulkhead monitor & four 5.6-inch plug-in monitors, Airshow 400, dual CD/DVD entertainment system, and Wifi capabilities.

The Falcon's dressing room, full galley, private lavatory and large baggage area ensure a flexible and functional trip while offering comfort and luxury at every Mile.

FALCON 2000 | N364SM

GENERAL CHARACTERISTICS

- Crew: 3
- Cabin Attendant: 1
- Capacity: 10 Passengers
- Max takeoff weight: 36500 Lb
- Powerplant: Engines: 2
- Engine Mfg: CFE Engines
- Engine Model: CFE 738-1-1B

PERFORMANCE

- Max Speed: 475 kts
- Normal Cruise: 459 kts
- Economy Cruise: 430 kts
- Normal Range: 2841 nm
- Max Range: 3130 nm

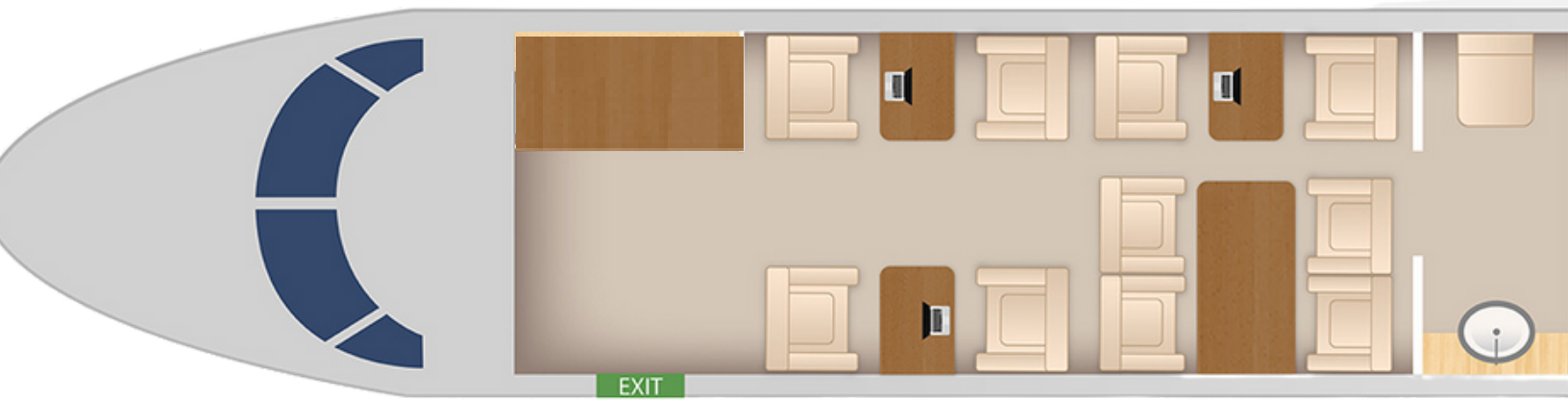
ADDITIONAL SPECS:

- YEAR OF MANUFACTURE: 2001
- REFURBISHED: 2018
- BAGGAGE CAPACITY: 134 cubic feet

AMENITIES

- Enclosed lavatory
- Refreshment center
- Wi-Fi
- Airshow

FALCON 2000 | N364SM



Crew: 3



PAX:10



WIFI

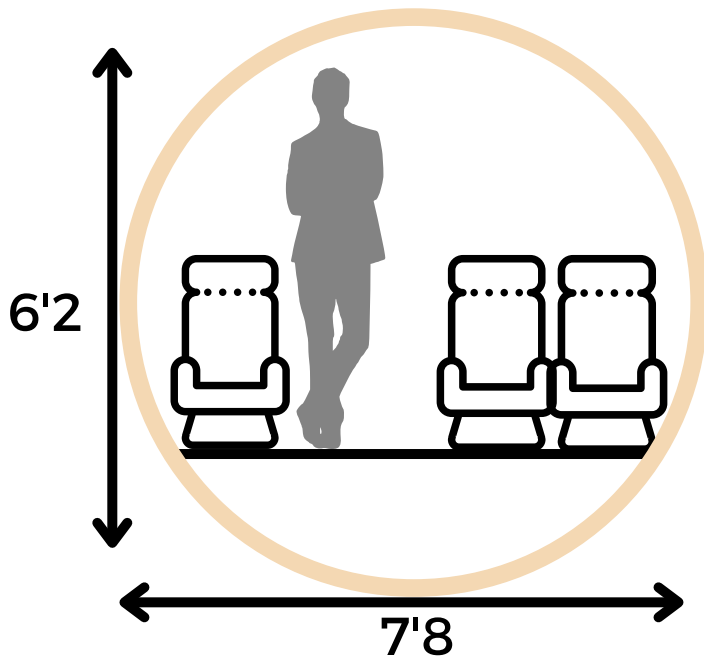


Airshow



Lavatory

1 Cabin Attendant

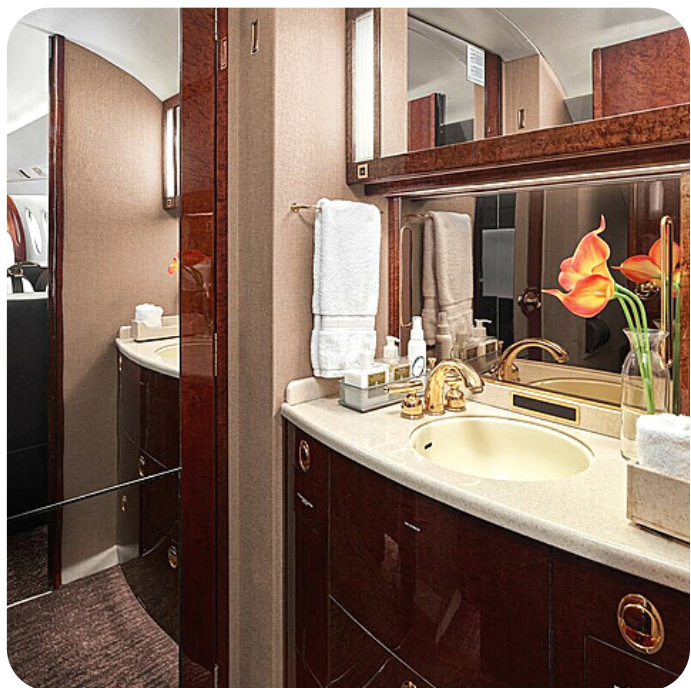


Suitcase 10x Carry-On 10x

FALCON 2000 | N364SM



FALCON 2000 | N508DJ



FALCON 2000 | N613BD

